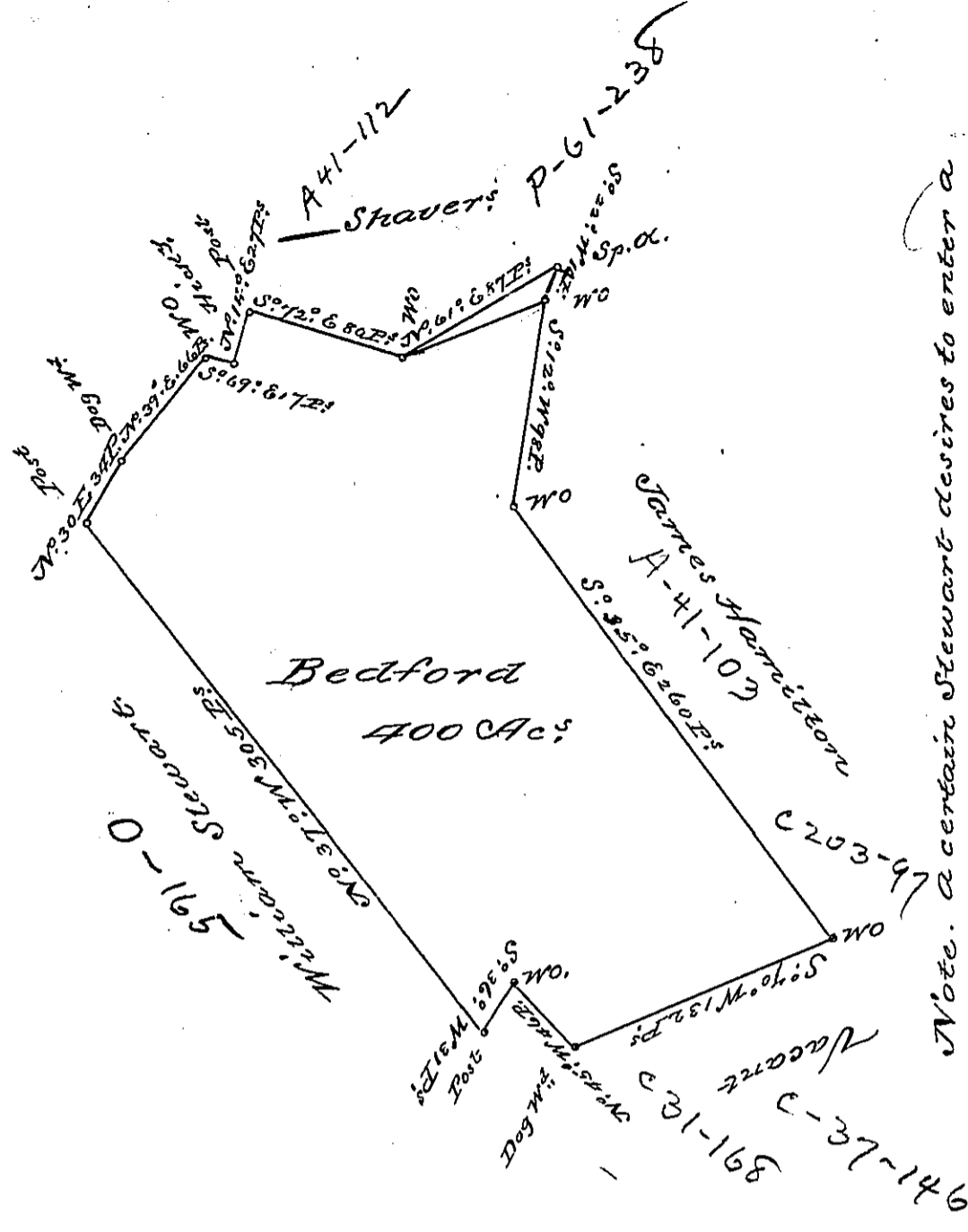


2-116 8 1958
127



A Draught of a Survey called Bedford situate on the Saw Mill River, in Washington County, containing 400 Acs. strict, executed Nov. 1st, 1787 in Consequence of a Certif. for 400 Acs. granted to Samuel and Robt Purviance by the Commissrs appointed by Cong. to adjust the claims to unpatented Lands in the Counties Monong. & Ohio, and duly entered &c

Presley Nevill }
 Mathw. Ritchie } D.S.

Jno. Lukens Esq. J. Genl

IN TESTIMONY that the above is a copy of the original remaining on file in the Department of Internal Affairs of Pennsylvania, made conformably to an Act of Assembly approved the 16th day of February, 1833, I have hereunto set my Hand and caused the Seal of said Department to be affixed at Harrisburg, this seventh day of June 1898

James W. Latta
 Secretary of Internal Affairs.

